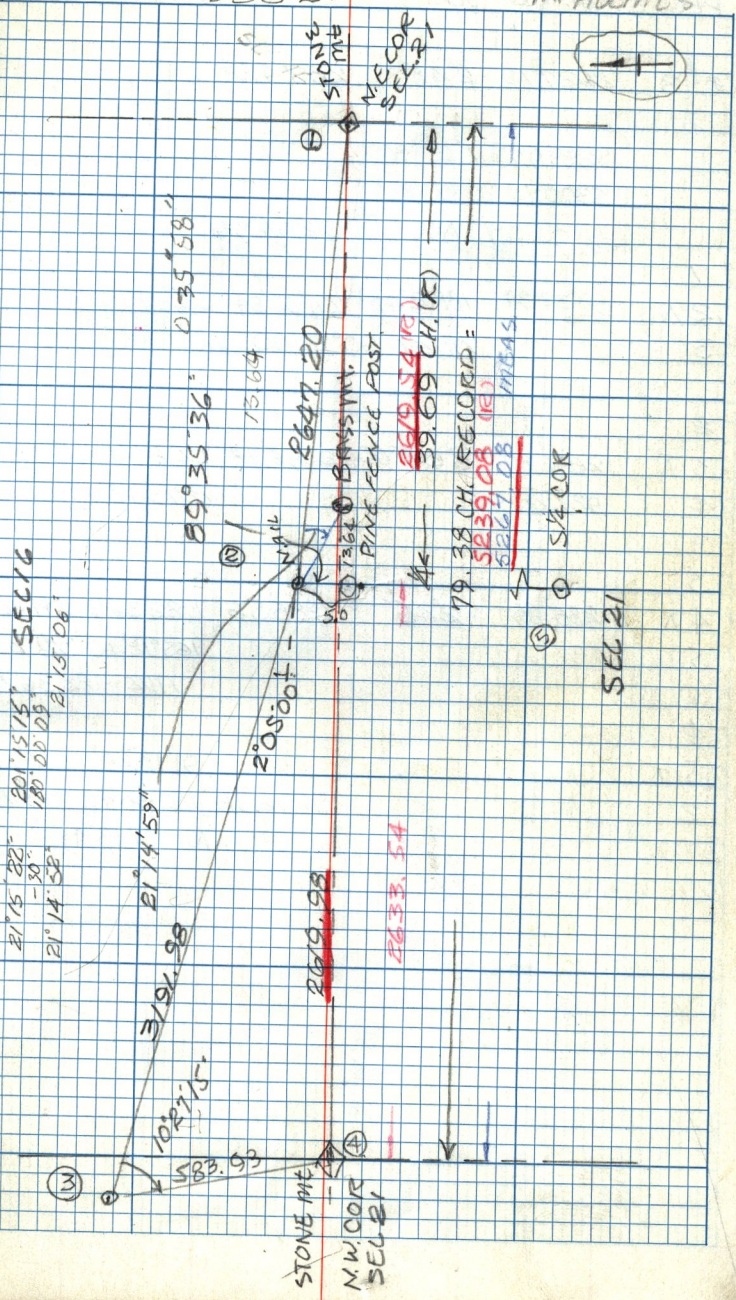


T7N R1E SEC 21

MC-51

16 JULY 1980 (R)
J. CARVER
M. HOLMES

21°15' 22" 201' 15.15"
-30" 180° 00' 00"
21°14' 52" 21' 15.06"



21°14'59"
205' 00"
39°35'36"
13.64

BRASS NAIL
PINE FENCE POST
2647.20

~~2619.93~~
39.09 CH. (R)

79.38 CH. RECORD =
~~5267.08~~
5239.08 (R) MBAS

⑤ ④ 5/4 COR

SEC 21

STONE ME
M.W. COR
SEC 21

~~2619.93~~

2633.54

